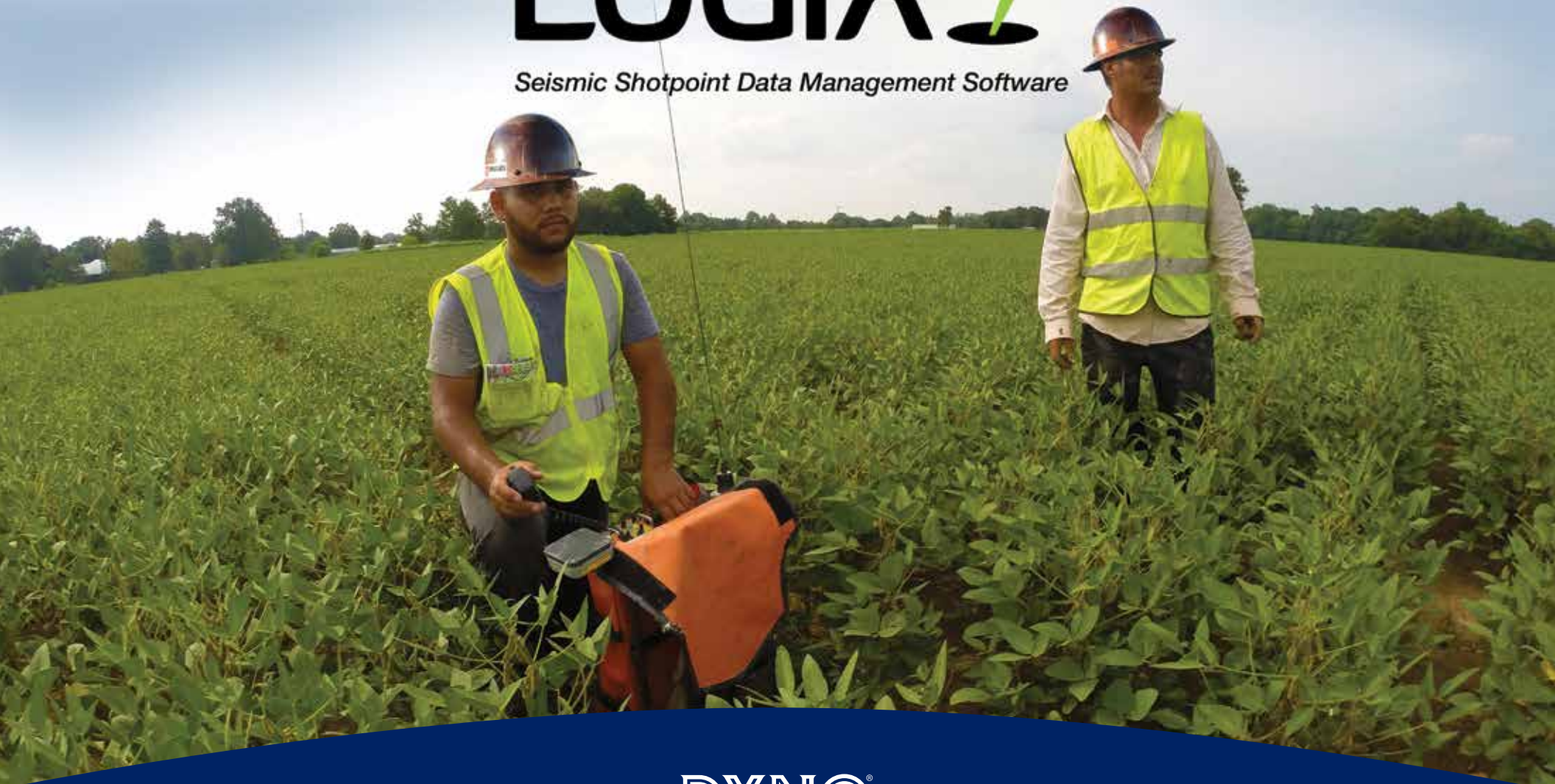


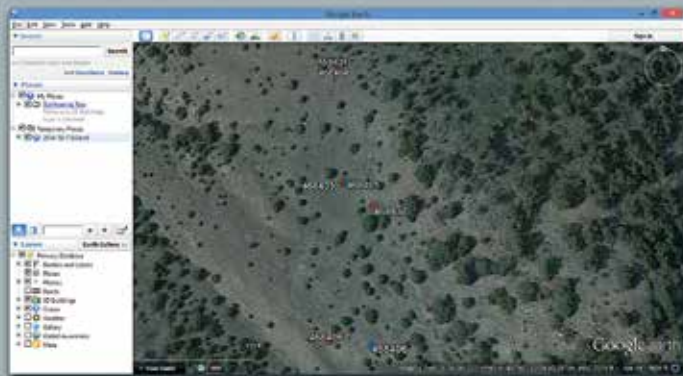
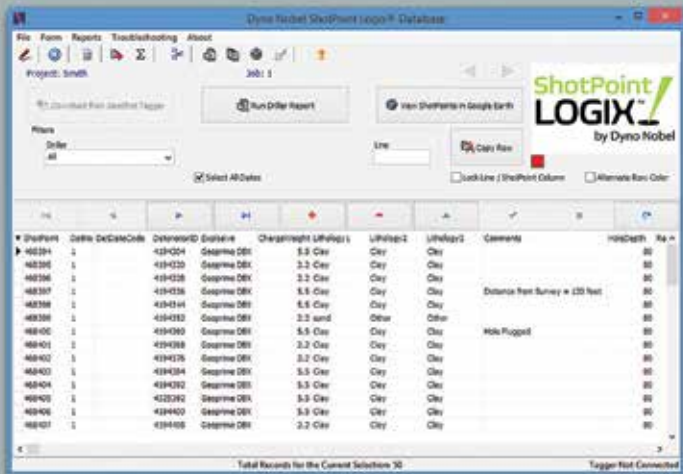
ShotPoint LOGIX[®]

Seismic Shotpoint Data Management Software



DYNO[®]
Dyno Nobel

Groundbreaking Performance[™]



ShotPoint Logix[®] software is Dyno Nobel's solution to meet the needs of our seismic customers so they can easily and accurately collect and report shotpoint data. ShotPoint Logix is compatible with both our electronic initiation system, GeoShot[™], as well as ShotPoint Tracker[™], a component of our electric initiation system.

This versatile system allows for several projects to be stored on a single database, and seamlessly imports and exports data in multiple formats. ShotPoint Logix is the easy to use, state of the art software that is simplifying data acquisition in the seismic industry.

Powerful Data Management Tool

- Exports data in multiple formats
- Creates a variety of reports
 - Drill reports
 - Summary reports
 - Custom reports
- Provides many data sorting and filtering options
- Imports and uploads data effortlessly for accurate reporting

Versatile and Easy to Use

- Compatible with GeoShot and ShotPoint Tracker
- Can be customized to automatically upload data from survey crew
- Uploads data from GeoShot Tagger, Seismic Interface Unit (SIU), and ShotPoint Tracker PDA
- Plots shotpoint data on Google Earth for easy visual and data management

Another practical innovation from Dyno Nobel!

www.dynonobel.com

800-732-7534